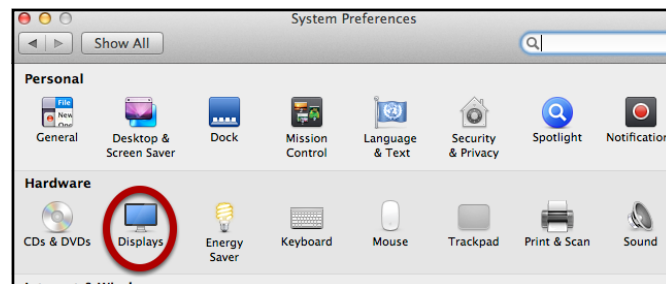


Mac Color Fix for Dark Images on Projectors

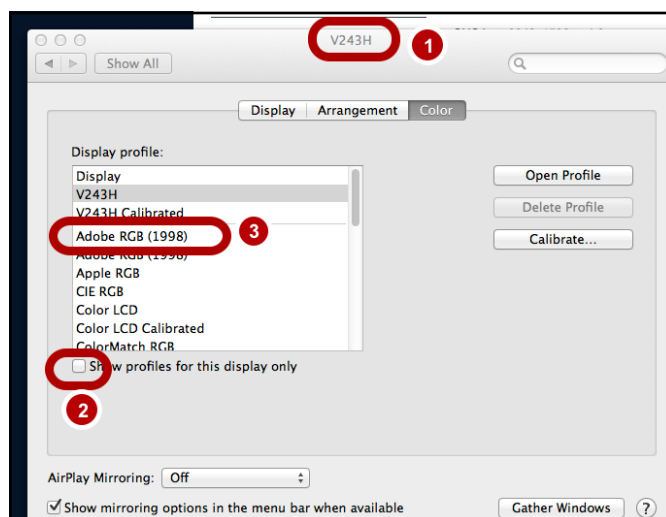
Your computer must be connected to the projector in question when you do this!

System Preferences > Displays

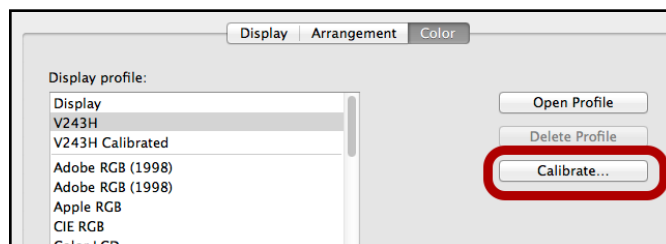
System Preferences is located under the Apple menu.



1. Select window that is NOT Color LCD
2. Uncheck "Show profiles for this display only"
3. Choose Adobe RGB



That will usually fix it, but if you want to tweak it more select Calibrate...



Click Next until you get to this screen.

Play with Gamma slider until image looks good. Click "continue"...

Determine your display's native gamma

This step is used to determine the gamma of the display's native luminance response curve.

Move the slider until the grey shape in the middle matches the background as much as possible. It may help to squint or sit back from the display.

After you have done this step, click the Continue button.

Go Back Continue

Again, see what looks better- 2.2 or 1.8

Select a target gamma

Select your desired gamma setting for this display. This will adjust the overall contrast of the display. Watch the picture on the right to see the effect of the different options. In most cases, it is best to use the Mac Standard gamma of 2.2.

After you have done this step, click the Continue button.

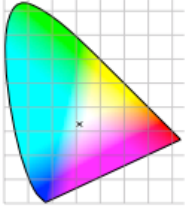
Go Back Continue

Leave this as "Native"

Select a target white point

Select the white point setting you want for your display. This will adjust the overall color tint of the display. In most cases it is best to use the display's native white point or a standard white point such as D50 or D65.

- D50 Warm yellowish white – standard for graphic arts work.
- D65 Neutral white – equivalent to midday sunlight.
- 9300 Cool blueish white – standard for most displays and televisions.
- Native Use native white point of this display.



After you have done this step, click the Continue button.

Give it a name that will make sense to you.

Give the profile a name

Give your profile a name.

It should remember for next time, but if needed you can select it from this list.

Display Arrangement Color

Display profile:

- EDH 2 Projector
- V243H Calibrated
- Adobe RGB (1998)
- Adobe RGB (1998)
- Apple RGB
- CIE RGB
- Color LCD
- Color LCD Calibrated

Show profiles for this display only

Open Profile
Delete Profile
Calibrate...