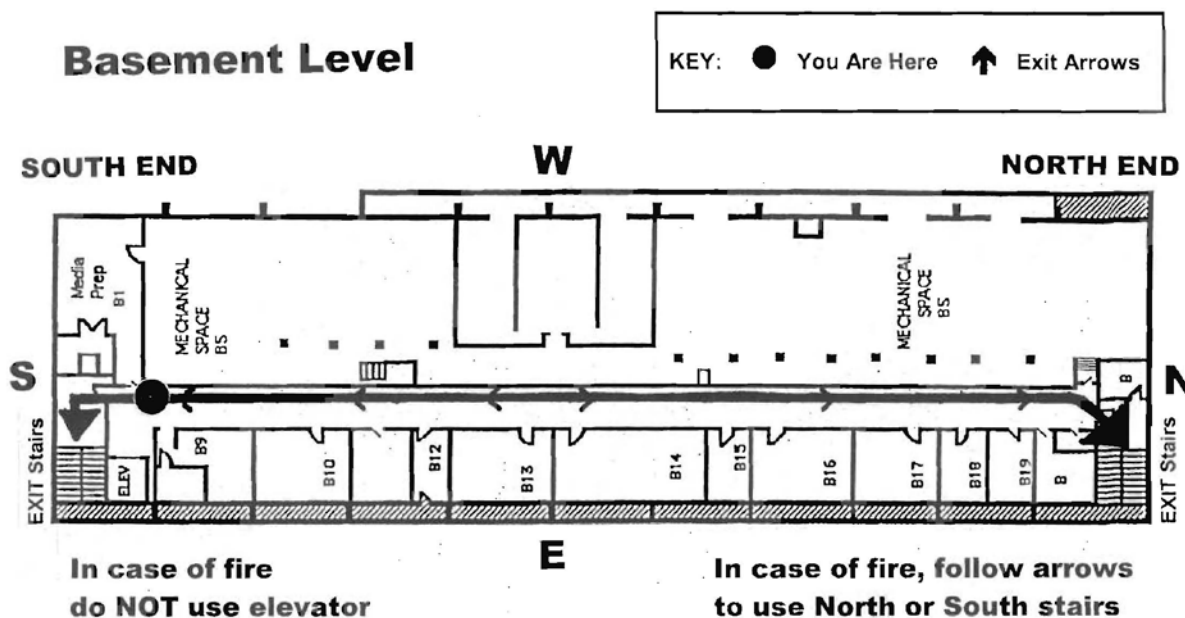


APPENDIX 2-B

COLE SCIENCE CENTER EMERGENCY EVACUATION PROCEDURES



Assembly Area: South of building on lawn in front of Lemelson

If you see smoke or fire:

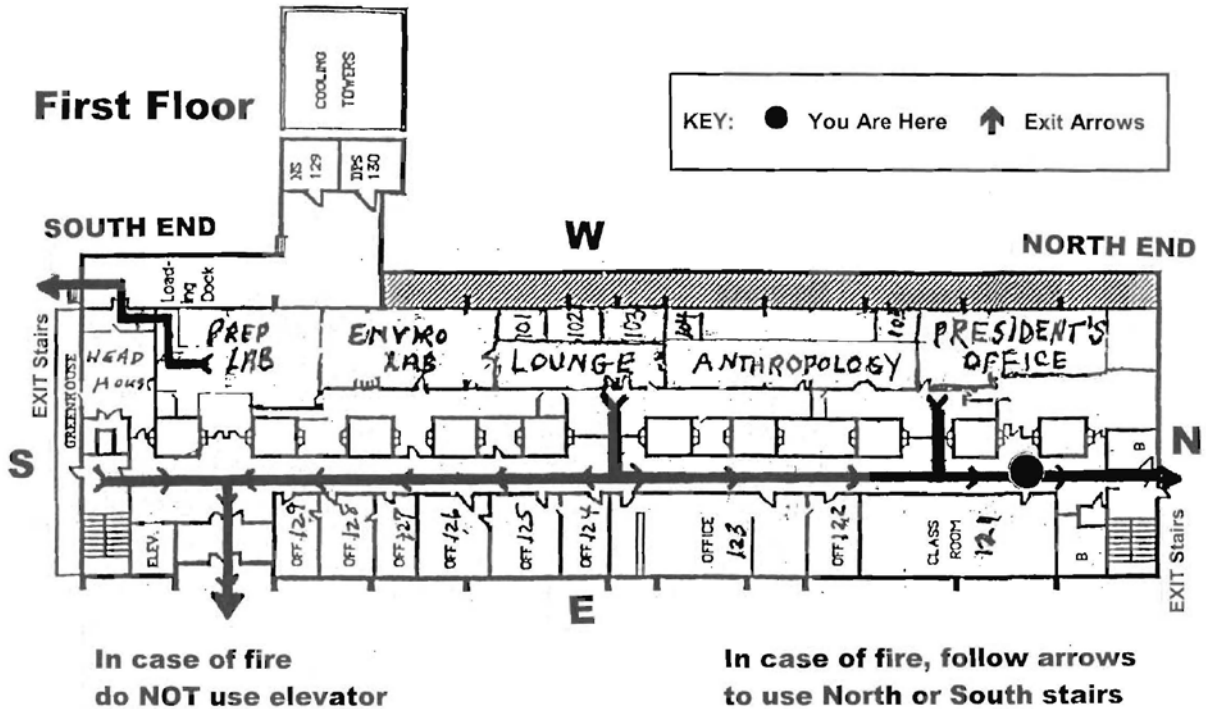
1. Alert those around you to evacuate.
2. Close door to room if feasible.
3. Activate fire alarm and evacuate.
4. From a safe place call Campus Police (5555) to describe conditions.
5. Congregate at assembly area.

If the fire alarm activates:

1. Evacuate the building by the nearest exit.
2. If anyone in the building needs assistance evacuating, call Campus Police (5555).
3. Close doors behind you as you exit the building.
4. Congregate at assembly area.

APPENDIX 2-B

**COLE SCIENCE CENTER
EMERGENCY EVACUATION PROCEDURES**



Assembly Area: South of building on lawn in front of Lemelson

If you see smoke or fire:

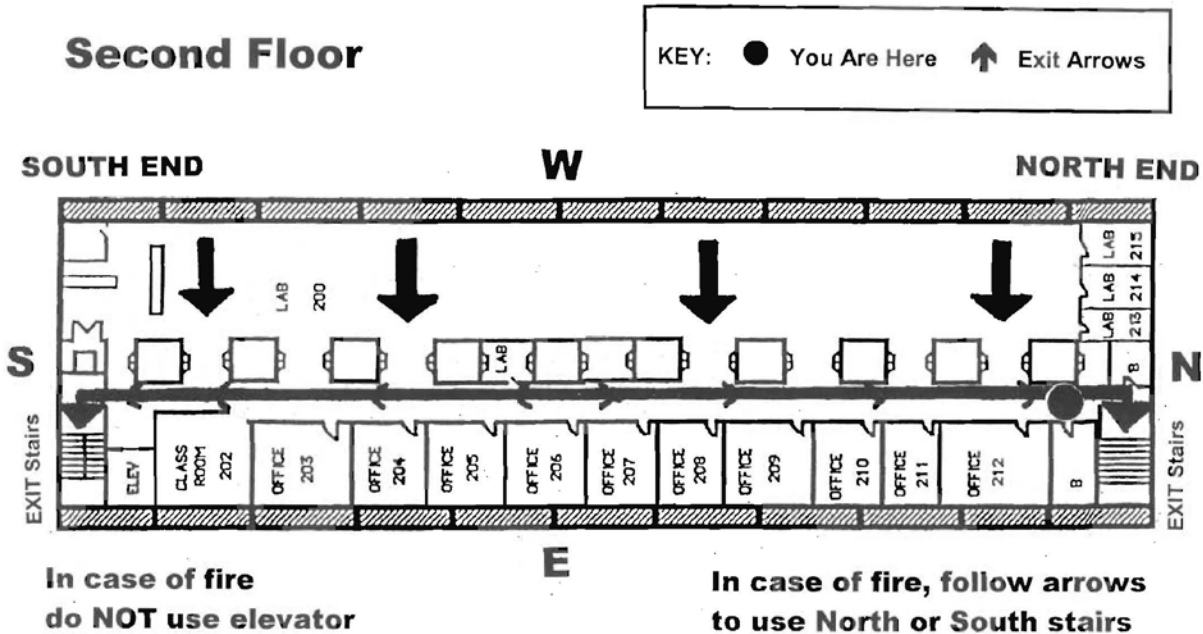
- 1. Alert those around you to evacuate.**
- 2. Close door to room if feasible.**
- 3. Activate fire alarm and evacuate.**
- 4. From a safe place call Campus Police (5555) to describe conditions.**
- 5. Congregate at assembly area.**

If the fire alarm activates:

- 1. Evacuate the building by the nearest exit.**
- 2. If anyone in the building needs assistance evacuating, call Campus Police (5555).**
- 3. Close doors behind you as you exit the building.**
- 4. Congregate at assembly area.**

APPENDIX 2-B

COLE SCIENCE CENTER EMERGENCY EVACUATION PROCEDURES



Assembly Area: South of building on lawn in front of Lemelson

If you see smoke or fire:

1. Alert those around you to evacuate.
2. Close door to room if feasible.
3. Activate fire alarm and evacuate.
4. From a safe place call Campus Police (5555) to describe conditions.
5. Congregate at assembly area.

If the fire alarm activates:

1. Evacuate the building by the nearest exit.
2. If anyone in the building needs assistance evacuating, call Campus Police (5555).
3. Close doors behind you as you exit the building.
4. Congregate at assembly area.

