

ACADEMIC AFFAIRS

**Vice President for Academic Affairs/
Dean of Faculty**
C. Cox

Library
R. Beckwith, Director

Institutional Diversity and Inclusion
A. Jordan and R. Cardenas

Central Records
R. Graham, Director

Center for Academic Advising
TBD, Dean

Associate VP of Academic Affairs
Y. Fernandez

Administrative Assistant
T. Mackin

Assistant Dean, Director of James Baldwin Program
K. Fernandez

Academic Records
H. Mazzarino, Associate Director

Advising Deans (3)

Dean of Faculty Office
J. Jeffery, Office Manager

Farm Center
N. Hanson, Director
S. Gaiss, CSA Mgr

Research & Instruction Librarians
R. Beckwith, Arts
A. DeCara, Science

Diversity Assistant
J. Jeffery

Registration
D. Grimm, Coord.

Administrative Assistant
A. Senecal

Global Education
K. Irwin, Director
Vacant, Asst. Director

Transcripts
I. Tremblay, Sr. Transcript Coord.
Vacant, Records Coord.

Archives
J. Neal, College Archivist (part time)

Community Engagement (CoCo)
(3)

Transcripts
(3)

Farm Center
(3)

Advising Deans
E. Alleva, Assoc. Dean
Z. Clift, Sr. Assoc Dean
M. Moorehead, Asst. Dean

Media Services
N. Young, Manager
J. Bruner, Adv. Media Coord

Office of Accessibility Resources
(2)

Community Engagement (CoCo)
M. Bombardier, Assist. Dean
B. Mattison, Peer Mentorship
A. Dryansky, Programming

Institutional Research
E. Melia, Director

Circulation
(3)

Ethics and Common Good
J. Benavente, Director
T. Van Dyck, Project Coord

Gallery
Vacant, Coordinator

Dean of Humanities and Arts
J. Bajorek

Dean of Natural, Social, and Cognitive Sciences
E. Conlisk

Director of Teaching and Learning Initiative
C. Cianfrani

Chair of Learning Collaboratives
K. Koehler

Director of Assessment
L. Wenk

Technical Services
J. Bolmarcich, Systems & Discovery Librarian

Faculty Support Staff
L. Green
K. Finnell
M. Malo

N. Gabriel, Lab Mgr/Greenhouse Supervisor
S. Steely, Lab Technician

Center for Design
(2)

Studio Arts Tech
G. Kline

Entrepreneurship Program
B. Golann, Faculty Assoc and Coord
R. Finn, Program Coord

Theatre
R. Duffy, Tech Dir.
J. Whalen, Costume Shop Supervisor

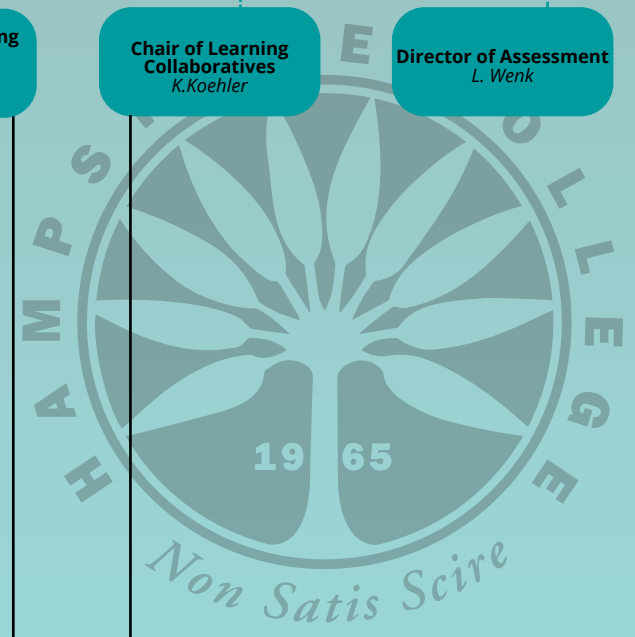
Photo Film Admin and Tech Director
K. Stewart

Circulation
S. Karanikis, Access Serv. Supervisor
O. Rossetti, Access Serv. Assoc.
S. Sharp, Evening Supervisor

Center for Design
G. Armitage, Shop Supervisor
T. Brown, Shop Supervisor

Writing Program
W. Ryan, Co-Director
A. Cuellar, Co-Director

Office of Accessibility Resources
M. Peters, Director of OARS
M. Bezark, Coord. of OARS/IDI



STUDENT AFFAIRS

**Vice President for Student Affairs/
Dean of Students**
Z. Waite

**Sr. Assoc. DoS/
New Student Experience & Retention**
P. Tinto

Assistant to VPSA & DoS
F. Arnold

Director of Student Affairs (Student Conduct & Int'l Student Services)
G. Narleski

Director Campus Safety & Security
C. Furgal
Call Sign: Unit 1

Director of Res Life & Student Engagement
M. Lewis

Student EMTs
(Number Varies; currently 2)

Lead Supervisor
Z. Parker-Mayforth
Call Sign: Unit 2

Administrative Assistant
Z. Kinney

Area Coord./ G/E Coord. of Identity-Based Housing
W. Syldor-Severino

Director Campus Activities & Leadership
C. Strycharz

Asst. Director of Housing Operations
J. Wildman

Safety Officer (3)
Call Signs 5, 6, 13

Lead Officer
Vacant
Call Sign: Unit 4

Lead Officer
Vacant
Call Sign: 3

Res Hall Director (Prescott/Merrill)
T. Donahue

Financial Assistant CLA
T. Parks

Program Assistant (casual)
A. Loeb Jenkins

Safety Officer (4)
Call Signs 8, 9, 10, 12

Safety Officer
K. Ruscetta
Call Sign: Unit 7

Res Hall Director (Dakin)
A. Wortzel

Director of Health & Counseling Services
S. Aierstuck

Assoc. DoS Community Advocacy & Outreach
J. Knight

Office Coordinator
K. Marques

Nurse Practitioner
D. Beckman

Director Counseling Services
E. McArdle, PhD

Director of Spiritual Life & Int'l Stu. Services
D. Ko

Director of Lebron-Wiggins Pran Cultural Center
M. Cartagena

Director Outdoor Prog. Recreation & Athletics
B. King

Security Officers (3)
W. Vazquez
Call Sign: Unit 5

E. Wyzik
Call Sign: Unit 6

A. Al Janabi
Call Sign: Unit 13

Assoc. Director of OPRA/Deputy Title IX Coord.
A. Surgen

Outdoor Instructor
E. Nazar

Instructor & RCC Operations Supervisor
S. Kanner

Director Wellness Programs
V. O'Grady

Staff Psycho-Therapist
A. Bardawil

Staff Psychologist
A. Skolnik, PhD

Psychiatric Social Worker for Diversity & Inclusion
Vacant

Advisor Inter Cultural Community Spiritual
S. Shiekh

Director CFF & QCA
E. Rimmer

Director Survivor Support & Violence Prevention Program
Vacant

Security Officers (4)
K. Jensen
Call Sign: Unit 8

L. Bouchard
Call Sign: Unit 9

M. Ruggeri
Call Sign: Unit 10

E. Delgado
Call Sign: Unit 12

Coaches

Manager Multisport
J. Morrell

Multisport Casual Staff

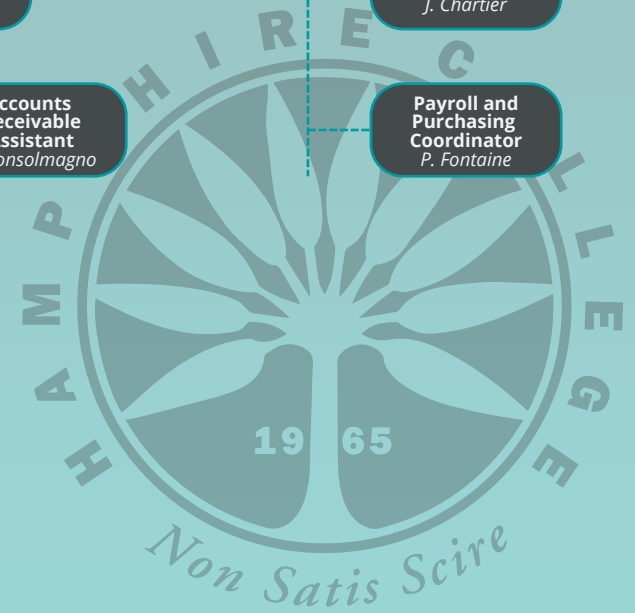
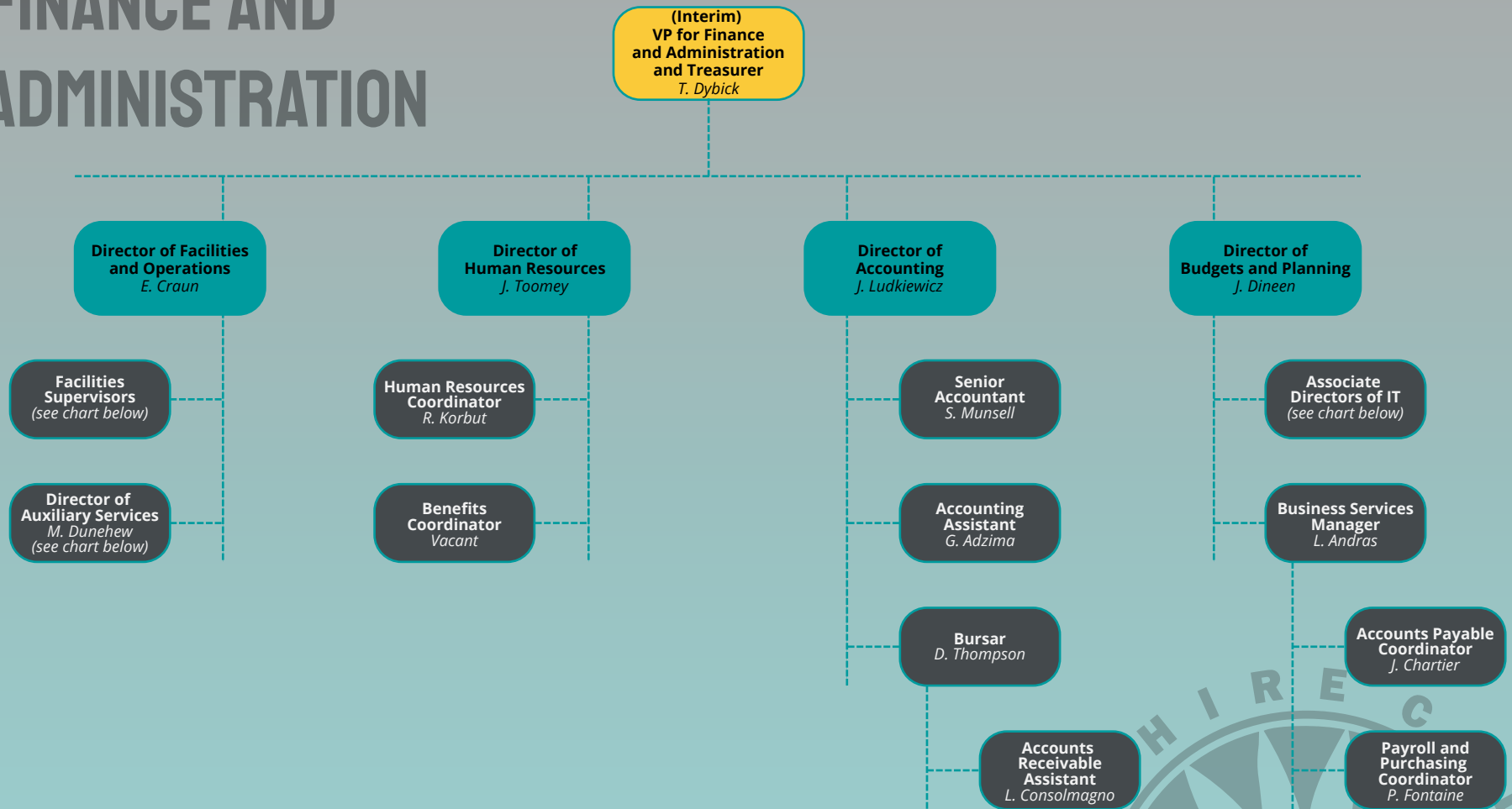
Instructors Fitness & Outdoor



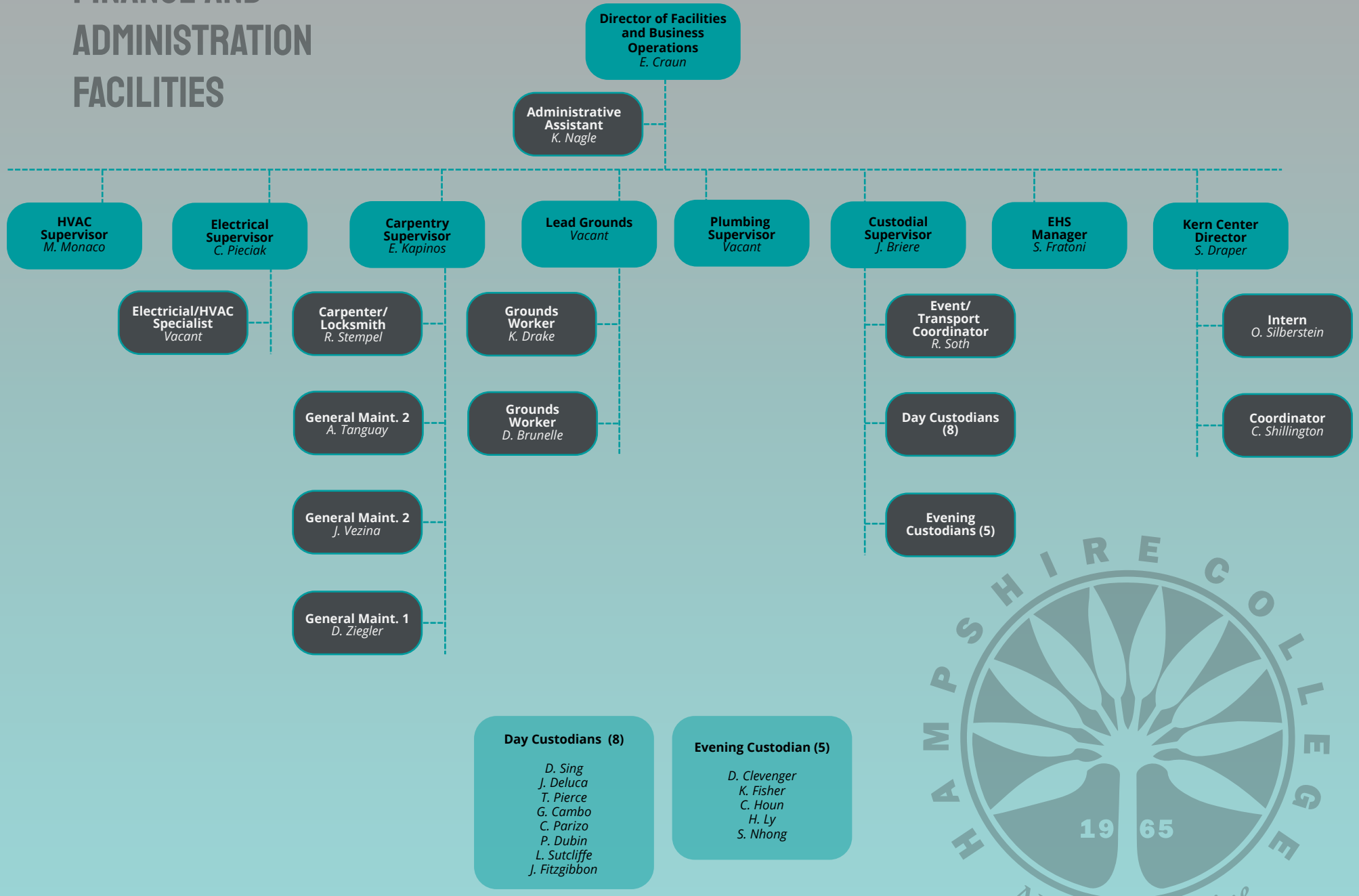
19 65

Non Satis Scire

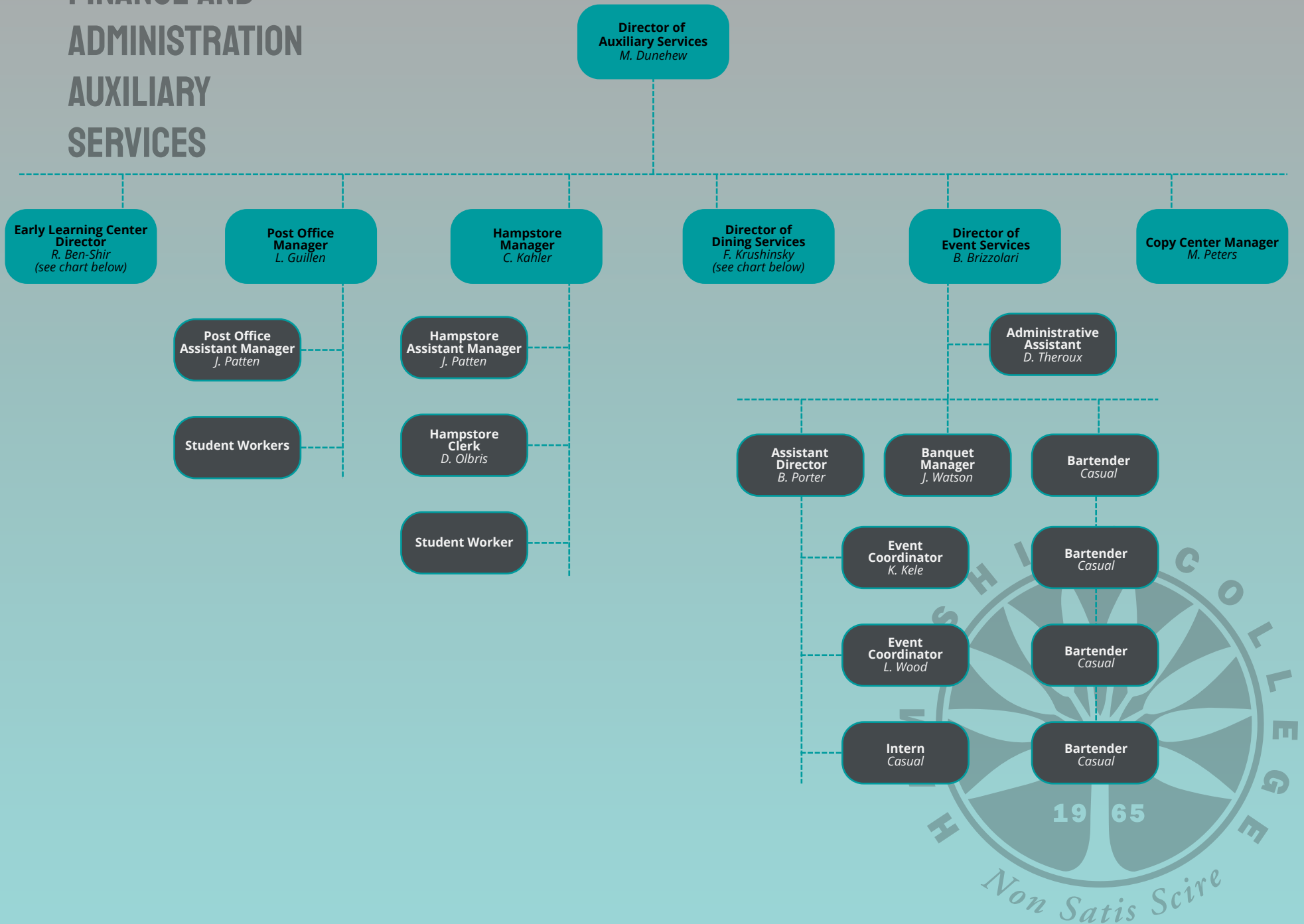
FINANCE AND ADMINISTRATION



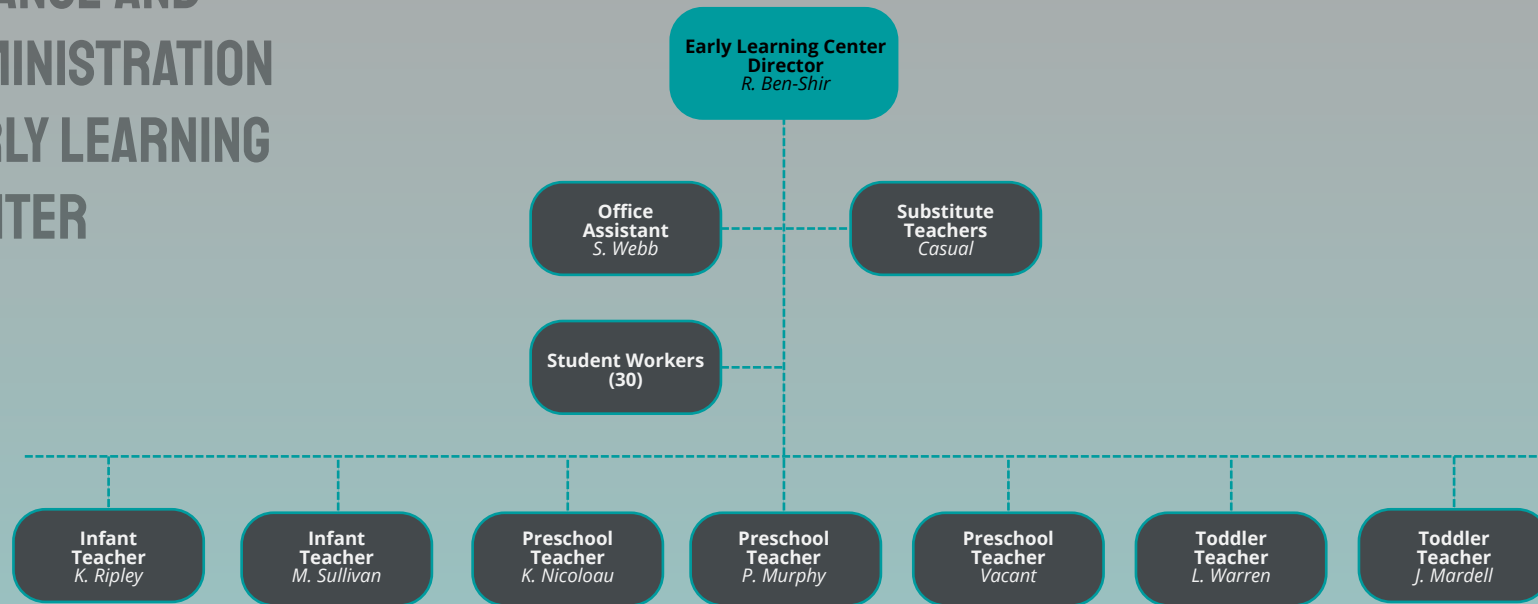
FINANCE AND ADMINISTRATION FACILITIES



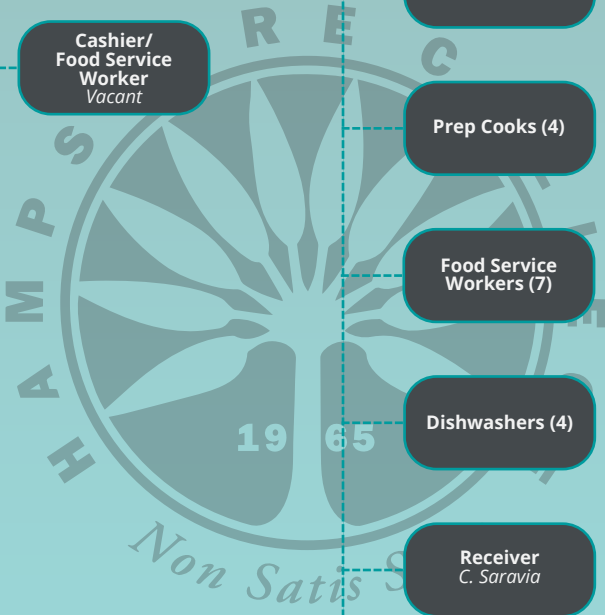
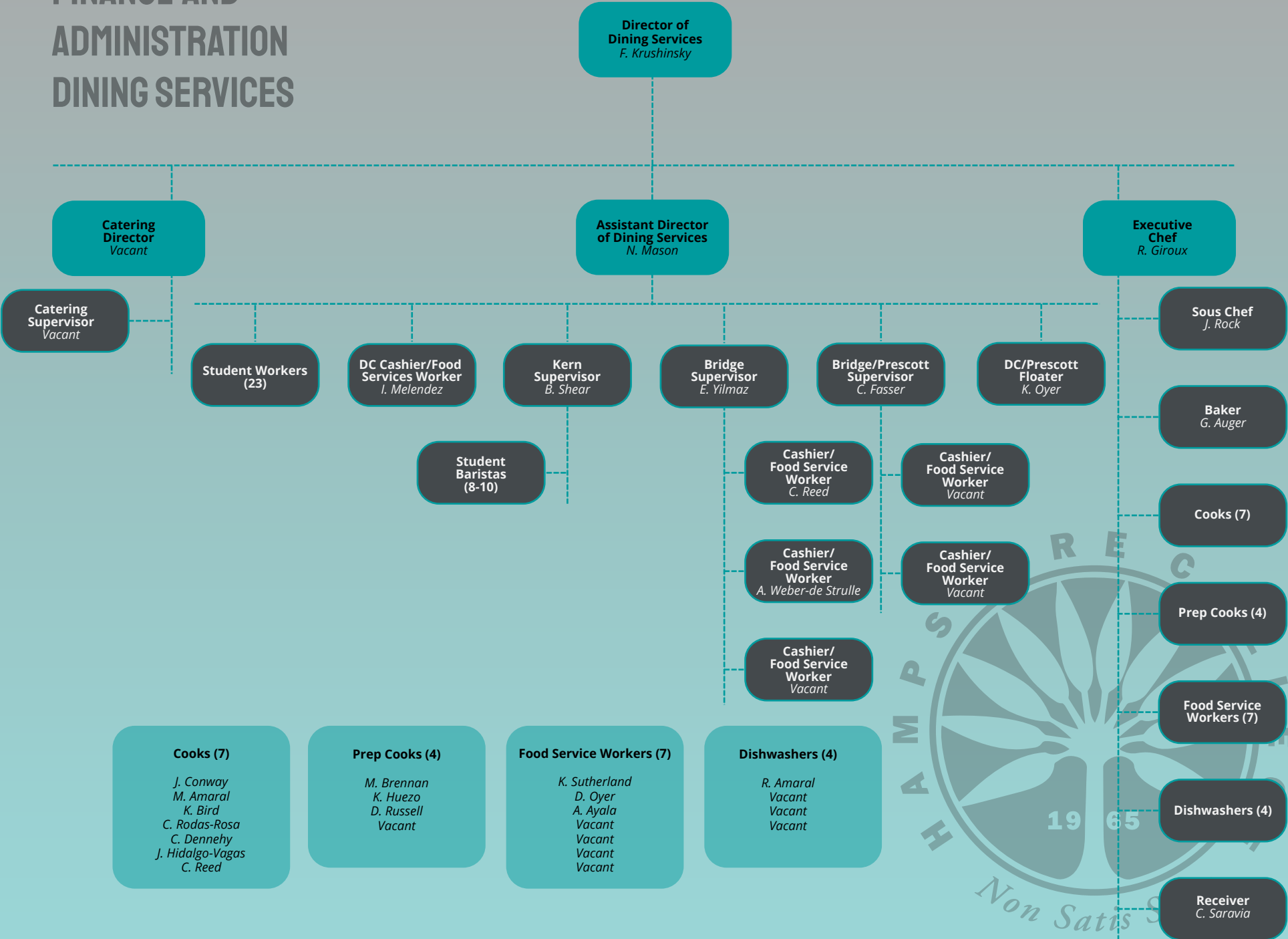
FINANCE AND ADMINISTRATION AUXILIARY SERVICES



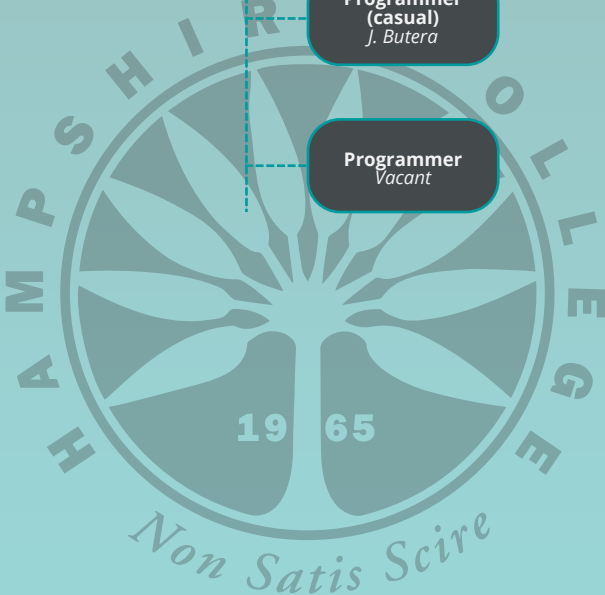
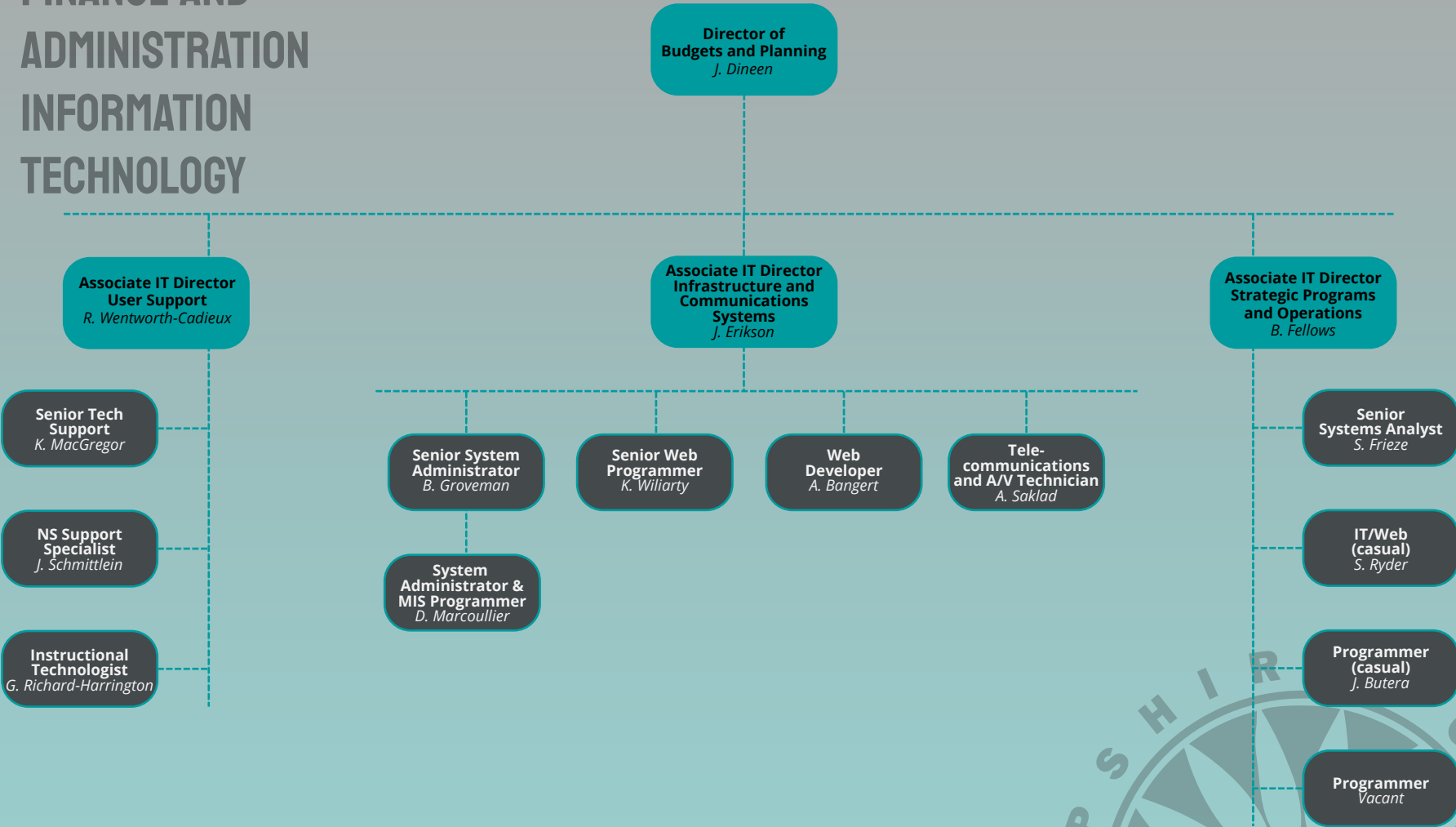
FINANCE AND ADMINISTRATION EARLY LEARNING CENTER



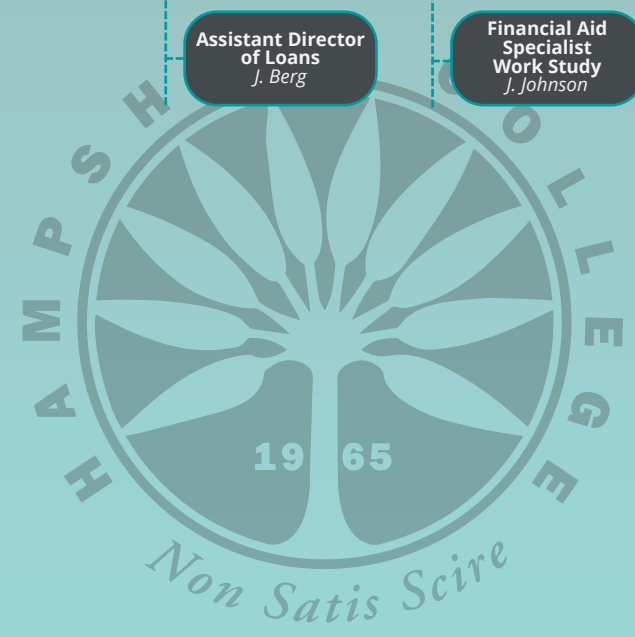
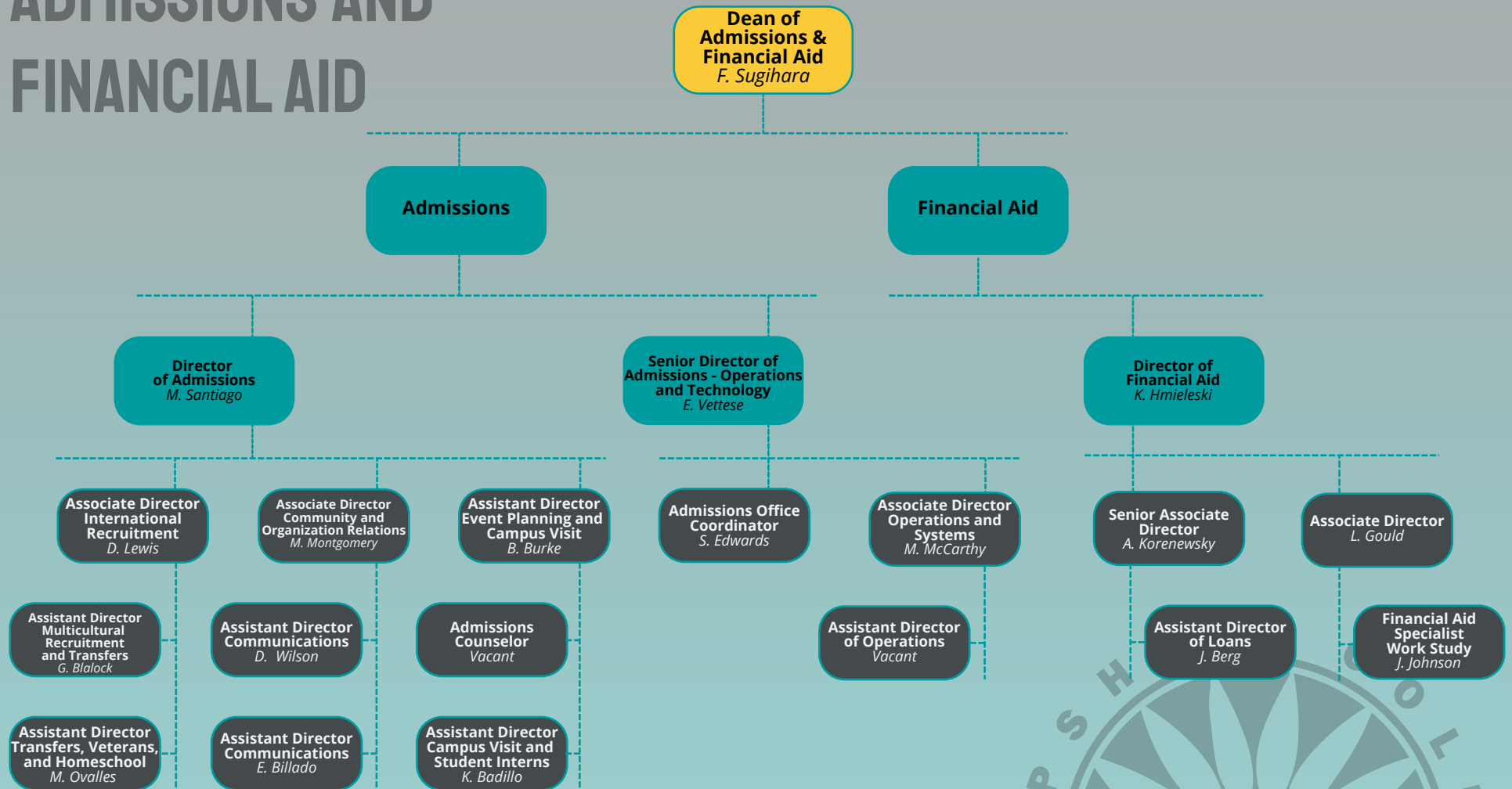
FINANCE AND ADMINISTRATION DINING SERVICES



FINANCE AND ADMINISTRATION INFORMATION TECHNOLOGY



ADMISSIONS AND FINANCIAL AID



COLLEGE ADVANCEMENT

